

# JAKEMY®



## JAKEMY DIY TOOL SERIES

- ELECTRONICS REPAIR
- INTELLIGENT HOUSEHOLD DISASSEMBLY

GZ YI FENG TECHNOLOGY ELECTRON CO.,LTD

## COMPANY PROFILE

GZ Yifeng Technology Electron CO.,LTD is developed from Guangzhou Wan Feng Electronics Company which was established in 1998.It is a modern company including research developments,manufacturing and customer services.Our factory specializes in manufacturing and exporting all kinds of hand tools and outdoor tools.We also have more than 15 years of leading experience in manufacturing and exporting business and professional production equipment, we can provide customer with OEM&ODM services.We have established cooperation with different channels of customers including supermarket and famous international electronic commerce companies,we can offer the products analysis and various styles of item pictures to our customer. We have a wide range of product line,meeting all kinds of DIY repairing needs .We have been developing different types of products according to the changing marketing demands.Besides we have the International Registration of Trade Marks,Product design patents and various test certifications.

## BRANDS

Our main brands are **JACKET** , **JAEKMY** . The products are popular throughout Asia, Europe, Africa and South America. They are famous for the perfect quality and reasonable price. We will focus on researching and developing new products, keeping high quality as our major mission. We will be greatly appreciated that if you share some opinions with us.

## GLOBAL TRADEMARK REGISTRATION CERTIFICATE



## OUR HISTORY OF GROWTH

**2016 ~ Now:** We have been expanding the global business and growth strategy.

**2015:** Our new product line-Project J of JAEKMY launch into the market in 2015.

**2013:** Our passion for keeping high quality has been seen around the world with our disciplined operations, rapid business growth, and loyal customer relationships.

**2012:** Participated in different types of hardware exhibition shows. Sales record has increased twice as much as the prior year and more and more regular customers continued to re-order our products because of our guaranteed high quality.

**2011:** Most of our products meet the standard of CE and RoHS.

**2010:** Foreign trading department was officially established and created a professional page through an international trading platform.

**2009:** Created our first official website.

**2007:** Transformed from traditional business into e-business.

**1998:** Company Established.

## Powerful Ultrasonic Cutter

### Accessories:

Storage Bag\*1 Ultrasonic cutter (Cordless)\*1 30° Angled Blade \*10 60° Angled Blade\*10 30° Narrow Blade\*10 Straight Blade\*10 Narrow Blade\*10 60cm USB-C to USB-C Charging Cable\*1 protection cases\*6 H2.0 Hex Wrench\*1 M2 Screw\*2



30° Angled Blade



Straight Blade



60° Angled Blade



Narrow Blade



30° Narrow Blade



JM-Y09

1

**2026 NEW ARRIVAL** // //

**13PCS**

## 360° Rotatable Cutting Support Stand

Accessories:

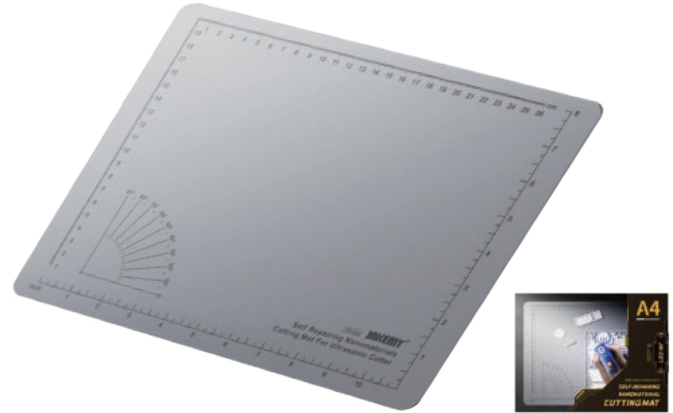
- Main Body of the Stand \*1
- G-Clamp for Desk Fixation\*1
- Screw for Support Arm\*2
- G-Clamp Screw for Fixing the Stand\*3
- Hex Wrench\*1



**JM-Z26**

**2026 NEW ARRIVAL** // //

## Self-repairing Nanomaterials Cutting Mat For Ultrasonic Cutter



**JM-Z27**

**2026 NEW ARRIVAL** // //

**24PCS**

## Parts Finishing Accessory Kit

Accessories:

- Scraper Roller\*1
- Pointed Tweezers\*1
- Bent Tweezers\*1
- Dual-headed Casing Pry Tool \*1
- Triangle Pry Piece \*1
- File\*5
- Nano Glass File\*1
- Model Nipper \*1
- Polishing Block \*1
- 400 Grit Sponge Sandpaper\*3
- 800 Grit Sponge Sandpaper\*3
- 1200 Grit Sponge Sandpaper\*3
- Model Plate Auxiliary Stand \*1
- Parts Box \*1



**JM-Z28**

**2026 NEW ARRIVAL** // //

## Ultrasonic Cutting Knife Base

**JM-Z29**



**JM-Z29B**



**JM-Z29 / Z29B**

## 2 In 1 Powerful Ultrasonic Cutter

### Pro Version:

30° Fine Point Blade*10	60° Fine Point Blade *10	30° Narrow Point Blade *10
Narrow Chisel Blade *10	Cutting Straight Blade*10	Cut-Resistant Finger Sleeve*4
Type-C Power Cable 1.5m*1	Polishing Stick Holder*1	Hex Screw*5
Polishing Stick*1	H2.0 Hex Wrench*1	Storage Bag*1
Power Adapter*1	Magnetic Storage Pad*1	Blade Holder*1
Anti-Slip Silicone Sleeve*1	Protection Case*7	
High-Power 2-In-1 Ultrasonic Cutter & Polisher (with cord)*1		

### Power Plug Specifications:

- US Plug     UK Plug     EU Plug  
 JP Plug     AU Plug



76PCS

## JM-Y10 PRO



## 2 In 1 Powerful Ultrasonic Cutter

### Basic version:

30° Fine Point Blades*10	Cut-Resistant Finger Sleeves*4	Hex Screws*5
Polishing Stick Holder*1	TYPE-C Power Cable 1.5m*1	Polishing Stick*1
H2.0 Hex Wrench*1	Power Adapter*1	Storage Bag*1
Blade Holder*1	Anti-Slip Silicone Sleeve*1	Protection Case*3
High-Power 2-In-1 Ultrasonic Cutter & Polisher (with cord)*1		

### Power Plug Specifications:

- US Plug     UK Plug     EU Plug  
 JP Plug     AU Plug



31PCS

## JM-Y10



## Screwdriver Set

### Socket:

⊙ M2.5 / M3.0 / M3.5 / M4.0 / M4.5 / M5.0 / M5.5 / G3.8 / G4.5 / OVAL / M6.0 / M7.0 / M8.0 / M8.0 / M10

### H4\*28MM:

⊕ T1\*3 / T2\*3 / T3\*2 / T4\*2 / T5\*2 / T6\*2 / T7\*2 / T8\*2 / T9\*2 / T10\*2 / T15\*2 / T20\*2 / T6H\*2 / T7H\*2 / T8H\*2 / T9H\*2 / T10H\*2 / T15H\*2 / T20H\*2 / T25H

⊙ H0.7\*3 / H0.9\*3 / H1.3\*3 / H1.5\*3 / H2.0\*2 / H2.5\*2 / H3.0\*2 / H3.5\*2 / H4.0\*2 / H4.5 / H5.0 / H6.0

⊕ 1.0\*3 / 1.5\*3 / 2.0\*2 / 2.5\*2 / 3.0\*2 / 3.5\*2 / JIS000\*2 / JIS00\*2 / JIS0\*2 / JIS1\*2 ⊙ YP4.5

⊙ 1.0\*3 / 1.3\*3 / 1.5\*2 / 2.0\*2 / 2.5\*2 / 3.0\*2 / 3.5\*2 / 4.0\*2 / 4.5 / 5.0 ⊙ AWL\*2 ⊙ 1.5\*2

⊙ 1/16\*3 / 1/8\*3 / 3/32\*2 / 5/32\*2 / 5/64\*2 / 7/64\*2 / 9/64\*2 ⊙ PEN ⊙ PRY

⊙ BH1.5 / BH2.0 / BH2.5 / BH3.0 / BH3.5 / BH4.0 ⊕ PZ00\*2 / PZ0\*2 / PZ1\*2 / PZ2\*2

⊕ U1.7\*2 / U2.0\*2 / U2.6\*2 / U3.0\*2 / U8.0 / U10 ⊙ SQ0\*2 / SQ1\*2 / SQ2\*2 / SQ3

⊙ Y0.8\*2 / Y2.0\*2 / Y2.5\*2 / Y3.0\*2 / Y3.5\*2 ⊕ 2.0\*2 / 2.3\*2 / 2.6\*2 / 3.0\*2

⊕ DR#6 / DR#7 / DR#8 / DR#9 / DR#10 ⊕ 0.8\*2 / 1.2\*2 / 1.5\*2 / 2.0\*2

⊕ EX#6 / EX#7 / EX#8 / EX#9 / EX#10 ⊕ IN PH2\*2

⊙ SIM0.8\*2 / SIM1.0\*2

### H6.3\*25MM:

⊕ 4.0 / 5.0 / 6.0 / 6.5 / Non-slip PH1 / Non-slip PH2 / Non-slip PH3 ⊕ Y1.0 / Y2.0 / Y3.0

⊕ PZ1 / PZ2 / PZ3 / Non-slip PZ1 / Non-slip PZ2 / Non-slip PZ3 ⊙ Connector

⊙ T15H / T20H / T25H / T27H / T30H ⊙ H5.0 / H6.0 ⊕ U6.0 / U8.0

⊙ 5.0 / 6.0 / 7.0 ⊕ 2.3 ⊕ R1

## JM-8199

257PCS



## Screwdriver set

### Socket:

⊙ M2.5 / M3.0 / M3.5 / M4.0 / M4.5 / M5.0 / G3.8 / G4.5 / OVAL

### H4 PRICISION DRILL BITS:

⊙ φ0.8 / φ1.0 / φ1.5 / φ2.0 / φ2.5 / φ3.0

### H6.3\*25MM:

⊕ Non-slip PH1 / Non-slip PH2 / Non-slip PH3 / Non-slip PZ1 / Non-slip PZ2 / Non-slip PZ3

⊙ T15H / T20H / T25H / T27H / T30H ⊙ H5.0 / H6.0 ⊙ 5.0 / 6.0

### H4\*28MM:

⊙ H0.7 / H0.9 / H1.3 / H1.5 / H2.0 / H2.5 / H3.0 / H3.5 / H4.0 ⊙ SIM0.8 / SIM1.0

⊕ 1.0 / 1.5 / 2.0 / 2.5 / 3.0 / 3.5 / JIS000 / JIS00 / JIS0 / JIS1 ⊕ 2.0 / 2.3 / 2.6

⊙ T1 / T2 / T3 / T4 / T5 / T6 / T7H / T8H / T9H / T10H ⊕ 0.8 / 1.2 / 1.5 / 2.0

⊙ 1/16 / 1/8 / 3/32 / 5/32 / 5/64 / 7/64 / 9/64 ⊕ IN PH2 ⊙ PRY

⊙ BH1.5 / BH2.0 / BH2.5 / BH3.0 / BH3.5 / BH4.0 ⊙ YP4.5 ⊙ AWL

⊕ DR#6 / DR#7 / DR#8 / DR#9 / DR#10 ⊙ SQ0 / SQ1 / SQ2 / SQ3

⊕ EX#6 / EX#7 / EX#8 / EX#9 / EX#10 ⊕ U1.7 / U2.0 / U2.6 / U3.0

⊙ 1.0 / 1.3 / 1.5 / 2.0 / 2.5 / 3.0 / 3.5 ⊙ PEN

⊙ Y0.8 / Y2.0 / Y2.5 / Y3.0 / Y3.5 ⊕ 1.5

## JM-8198

117PCS

2025 NEW ARRIVAL

## Right Angle Screw

\*This product is dedicated to JM-8196 electric screwdriver handle

Compatible with both H4.0 and H6.3 bits



H4.0\*28mm



H6.3\*25mm



### JM-Z25

2025 NEW ARRIVAL

14PCS

## Screwdriver Set

H4\*28MM:

⊕ 1.5 2.0 ⊖ 1.5 ⊖ 2.0 ⊕ 2.3 ⊖ Y0.8 ⊕ 0.8 ⊕ 4.5

H6.3\*25MM:

⊕ 4.0 5.0 ⊖ 4.0 5.0 ⊕ H5.0 H6.0



### JM-8197

2025 NEW ARRIVAL

## Electric Screwdriver Set

H4\*28MM:

⊕ 1.5 2.0 3.0 ⊖ 1.5 2.0 3.0 ⊕ 0.8 1.2 1.5 ⊕ T2 T3 T4 ⊖ Y0.8 Y2.0 ⊕ YP4.5

⊖ 2.3 ⊕ U1.7 ⊕ 1.5

H6.3\*25MM:

⊕ T8H T9H T10H ⊕ H3 H4 H5 H6 ⊕ 4.0 5.0 ⊖ 4.0 5.0 ⊖ Y1.0

Accessories:

Manual screwdriver handle(with scale)\*1 Magnetizer\*1

Charging Cable\*1 Strap for electric screwdriver\*1

Electric torque:

1ST GEAR TORQUE 1.9-3.0 kgf.cm (0.19-0.30 N.m) SPEED 130-135 RPM

2ND GEAR TORQUE 4.5-5.8 kgf.cm (0.45-0.58 N.m) SPEED 140-145 RPM

3RD GEAR TORQUE 6.5-7.5 kgf.cm (0.65-0.75 N.m) SPEED 154-158 RPM

4TH GEAR TORQUE 7.6-10 kgf.cm (0.76-1 N.m) SPEED 163-165 RPM



Press and hold for 3 sec to enter lighting mode



Quickly double-tap to enter SOS mode



Double-tap again to enter strobe mode



### JM-8196

35PCS



# 180 IN 1 Electric Screwdriver Kit

180PCS

## Socket:

⊙ M2.5 M3.0 M3.5 M4.0 M4.5 M5.0 M5.5 G3.8 G4.5 ü PH2 OVAL

## H4\*45MM:

⊕ 1.5 2.0 ⊖ 1.5 2.0

## H4\*28MM:

⊙ T1\*3 T2\*3 T3\*2 T4\*2 T5 T6 T7 T8 T9 T10 T15 T20 T6H T7H T8H T9H T10H T15H T20H T25H

⊙ H0.7\*2 H0.9\*2 H1.3 H1.5 H2.0 H2.5 H3.0 H3.5 H4.0 H4.5 H5.0 H6.0

⊕ 1.0\*2 1.5\*3 2.0\*2 2.5\*2 3.0\*3 3.5\*2 JIS000 JIS00 JIS0 JIS1

⊙ SIM0.8 SIM1.0 ⊙ 4.5 ⊙ PRY ⊙ AWL ⊗ 1.5\*2

⊖ 1.0\*2 1.3\*2 1.5\*2 2.0\*2 2.5\*2 3.0\*2 3.5\*2 4.0\*2 4.5 5.0

⊙ 1/16 1/8 3/32 5/32 5/64 7/64 9/64

⊙ Y0.8\*3 Y2.0\*2 Y2.5\*2 Y3.0\*2 Y3.5\*2

⊙ U1.7 U2.0\*2 U2.6\*2 U3 U8 U10

⊙ 0.8\*3 1.2\*3 1.5\*3 2.0\*2

⊕ PZ00 PZ0 PZ1 PZ2

⊙ SQ0 SQ1 SQ2 SQ3

⊙ 2.0 2.3 2.6 3.0 ⊕ IN PH2\*2

⊙ EX#6 EX#7 EX#8 EX#9 EX#10

⊙ DR#6 DR#7 DR#8 DR#9 DR#10

H4.0mm to H6.3mm socket

H6.3mm to H4.0mm socket

[  ] + [  ]

## Accessories:

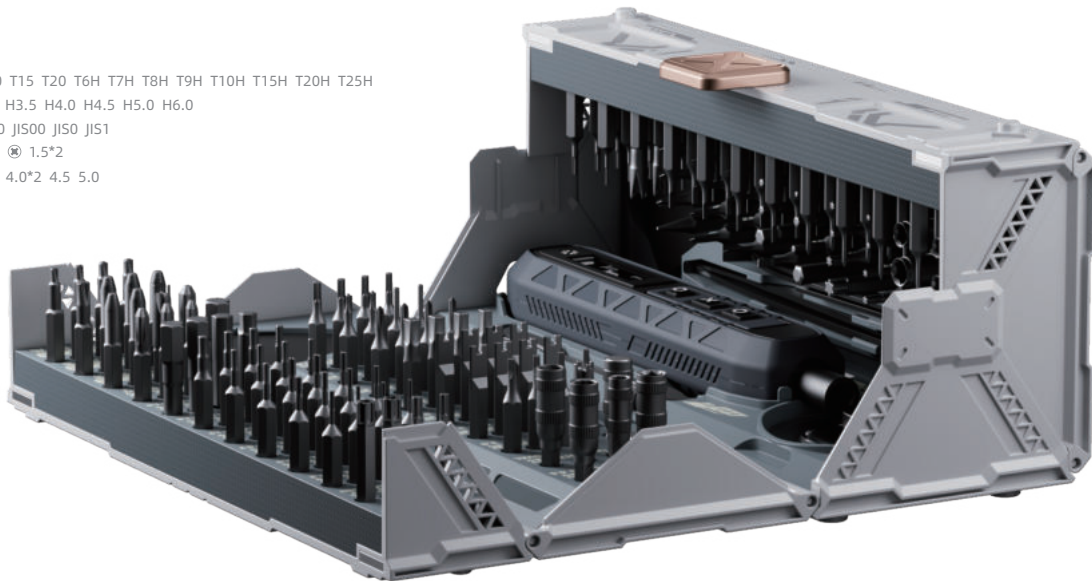
Opening tool\*5 Ultra-thin opening tool\*5

Built-in magnetizer\*1 Suction cup\*1

Spudger\*2 Extension rod\*1

Creative handle\*1 Tweezers\*2

Charging cable\*1



JM-8193

# 180 IN 1 Screwdriver Kit

180PCS

## Socket:

⊙ M2.5 M3.0 M3.5 M4.0 M4.5 M5.0 M5.5 G3.8 G4.5 ü PH2 OVAL

## H4\*45MM:

⊕ 1.5 2.0 ⊖ 1.5 2.0

## H4\*28MM:

⊙ T1\*3 T2\*3 T3\*2 T4\*2 T5 T6 T7 T8 T9 T10 T15 T20 T6H T7H T8H T9H T10H T15H T20H T25H

⊙ H0.7\*2 H0.9\*2 H1.3 H1.5 H2.0 H2.5 H3.0 H3.5 H4.0 H4.5 H5.0 H6.0

⊕ 1.0\*2 1.5\*3 2.0\*2 2.5\*2 3.0\*3 3.5\*2 JIS000 JIS00 JIS0 JIS1

⊙ SIM0.8 SIM1.0 ⊙ 4.5 ⊙ PRY ⊙ AWL ⊙ 1.5\*2

⊖ 1.0\*2 1.3\*2 1.5\*2 2.0\*2 2.5\*2 3.0\*2 3.5\*2 4.0\*2 4.5 5.0

⊙ 1/16 1/8 3/32 5/32 5/64 7/64 9/64

⊙ Y0.8\*3 Y2.0\*2 Y2.5\*2 Y3.0\*2 Y3.5\*2

⊙ U1.7 U2.0\*2 U2.6\*2 U3 U8 U10

⊙ 0.8\*3 1.2\*3 1.5\*3 2.0\*2

⊕ PZ00 PZ0 PZ1 PZ2

⊙ SQ0 SQ1 SQ2 SQ3

⊙ 2.0 2.3 2.6 3.0 ⊕ IN PH2\*2

⊙ EX#6 EX#7 EX#8 EX#9 EX#10

⊙ DR#6 DR#7 DR#8 DR#9 DR#10

H4.0mm to H6.3mm socket

H6.3mm to H4.0mm socket

[  ] + [  ]

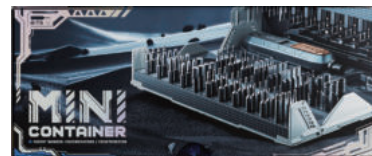
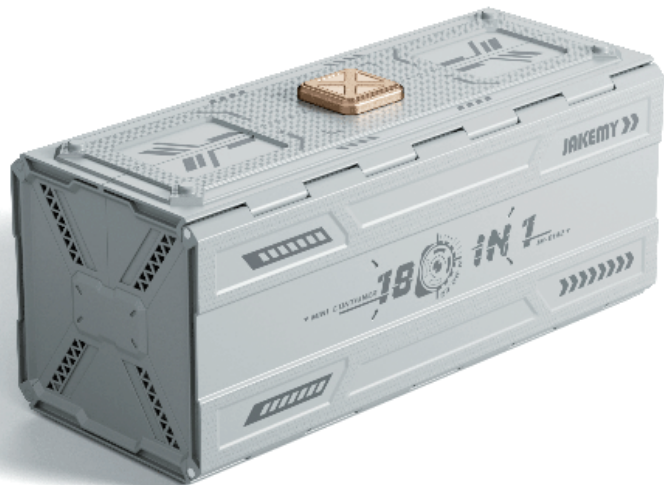
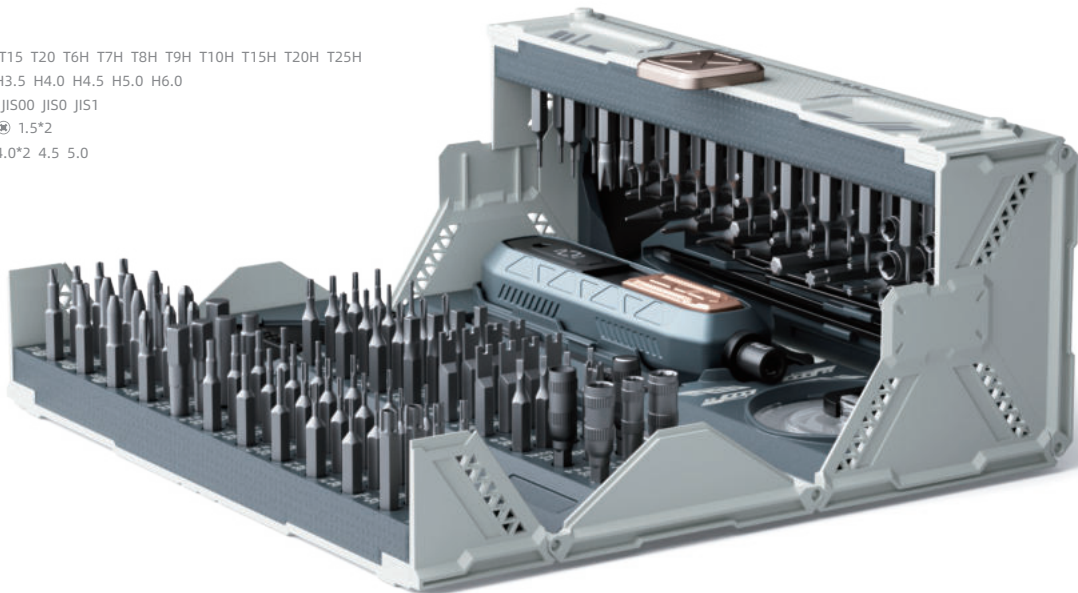
## Accessories:

Opening tool\*5 Ultra-thin opening tool\*5

Built-in magnetizer\*1 Suction cup\*1

Spudger\*2 Extension rod\*1

Creative handle\*1 Tweezers\*2



JM-8192

## Square Handle Design Screwdriver

21PCS

H4\*28MM:

⊕ 1.0 1.5 3.0 3.5 ⊖ 1.0 1.5 ⊖ Y0.8 Y2.0 ⊕ U1.7 U2.0  
 ⊕ T2 T6 T8 T10 ⊕ 0.8 1.2 ⊕ H1.5 ⊕ 2.0 2.3 ⊕ 1.5

Color option:

Dark Black  
 Noble Purple



JM-8195

## Screwdriver Set

25PCS

H4\*28MM:

⊕ T1 T2 T3 T4 T5 T6H T7H ⊕ H1.5 H2.0 H2.5  
 ⊕ 1.5 3.0 3.5 ⊖ Y0.8 Y2.0 ⊖ 1.5 2.0 2.5  
 ⊕ 0.8 1.2 ⊕ 2.3 ⊕ 1.5

Accessories:

Big size shelf blocks\*2 Medium size shelf blocks\*12(black color) Handle\*1

Medium size shelf blocks\*12(white color) Small size shelf blocks\*12(black color)

Small size shelf blocks\*12(white color)



JM-8185

## Screwdriver Set

83PCS

Sockets:

M2.5 M3.0 M3.5 M4.0 M4.5 M5.0 M5.5 G3.8 G4.5 U8 U10 PH2 ü

H4\*28MM:

⊕ H0.9 H1.3 H1.5 H2.0 H2.5 H3.0 H3.5 H4.0 H4.5 H5.0 H6.0 ⊖ Y0.8 Y2.0 Y2.5 Y3.0  
 ⊕ T1 T2 T3 T4 T5 T6H T7H T8H T9H T10H T15H T20H T25H ⊕ SQ1 SQ2 SQ3  
 ⊖ 1.0 1.5 2.0 2.5 3.0 3.5 4.5 5.0 ⊕ 1.0 1.5 2.0 2.5 3.0 3.5 ⊕ 2.3 ⊕ 1.5  
 ⊕ 0.8 1.2 1.5 2.0 ⊕ YP4.5

H6.3\*25MM:

H4\*45MM:

⊖ 6.0 7.0 ⊕ 6.0 6.5 ⊖ 1.5 2.0 ⊕ 1.5 2.0

Accessories:

Spudger\*2 Sockets H4 to H6.3\*1

Ultra thin opening tools\*3

Magnetizer ring\*1

Suction cup\*1

Tweezers\*1

Manual\*1

Handle\*1



JM-8186A

## Screwdriver Set

83PCS

Sockets:

M2.5 M3.0 M3.5 M4.0 M4.5 M5.0 M5.5 G3.8 G4.5 U8 U10 PH2 ü

H4\*28MM:

⊕ H0.9 H1.3 H1.5 H2.0 H2.5 H3.0 H3.5 H4.0 H4.5 H5.0 H6.0 ⊖ Y0.8 Y2.0 Y2.5 Y3.0  
 ⊕ T1 T2 T3 T4 T5 T6H T7H T8H T9H T10H T15H T20H T25H ⊕ SQ1 SQ2 SQ3  
 ⊖ 1.0 1.5 2.0 2.5 3.0 3.5 4.5 5.0 ⊕ 1.0 1.5 2.0 2.5 3.0 3.5 ⊕ 2.3 ⊕ 1.5  
 ⊕ 0.8 1.2 1.5 2.0 ⊕ YP4.5

H6.3\*25MM:

H4\*45MM:

⊖ 6.0 7.0 ⊕ 6.0 6.5 ⊖ 1.5 2.0 ⊕ 1.5 2.0

Accessories:

Spudger\*2 Sockets H4 to H6.3\*1

Ultra thin opening tools\*3

Magnetizer ring\*1

Suction cup\*1

Tweezers\*1

Manual\*1

Handle\*1



JM-8186B

## Screwdriver Set

83PCS

### Sockets:

M2.5 M3.0 M3.5 M4.0 M4.5 M5.0 M5.5 G3.8 G4.5 U8 U10 PH2 ü

### H4\*28MM:

● H0.9 H1.3 H1.5 H2.0 H2.5 H3.0 H3.5 H4.0 H4.5 H5.0 H6.0 ⊖ Y0.8 Y2.0 Y2.5 Y3.0  
 ⊕ T1 T2 T3 T4 T5 T6H T7H T8H T9H T10H T15H T20H T25H ⊕ SQ1 SQ2 SQ3  
 ⊖ 1.0 1.5 2.0 2.5 3.0 3.5 4.5 5.0 ⊕ 1.0 1.5 2.0 2.5 3.0 3.5 ⊕ 2.3 ⊕ 1.5  
 ⊕ 0.8 1.2 1.5 2.0 ⊕ YP4.5

### H6.3\*25MM:

⊖ 6.0 7.0 ⊕ 6.0 6.5

### Accessories:

Spudger\*2 Sockets H4 to H6.3\*1  
 Ultra thin opening tools\*3  
 Magnetizer ring\*1  
 Suction cup\*1  
 Tweezers\*1  
 Manual\*1  
 Handle\*1



JM-8187

## Screwdriver Set

32PCS

### H4\*28MM:

● H1.5 H2.0 H3.0 H4.0 ⊕ T1 T2 T4 T6H T8H T10H T15H  
 ⊕ 1.0 1.5\*2 2.0 2.5 ⊖ 1.5\*2 2.0 2.5\*2 ⊕ 2.0 3.0  
 ⊕ SIM0.8 ⊕ U2.6 ⊕ 1.5 ⊖ Y0.8 Y2.0 Y2.5 Y3.0

### Accessories:

Tweezers\*1 Handle\*1



JM-8189A

## Precision screwdriver set

32PCS

### H4\*28MM:

● H1.5 H2.0 H3.0 H4.0 ⊕ T1 T2 T4 T6H T8H T10H T15H  
 ⊕ 1.0 1.5\*2 2.0 2.5 ⊖ 1.5\*2 2.0 2.5\*2 ⊕ 2.0 3.0  
 ⊕ 0.8 ⊕ U2.6 ⊕ 1.5 ⊖ Y0.8 Y2.0 Y2.5 Y3.0

### Accessories:

Tweezers\*1  
 Handle\*1



JM-8189B

## Light weight aluminum alloy screwdriver

⊕ 0.8 ⊕ 1.5 ⊖ Y0.8 ⊕ T1 ⊕ 1.5

### Accessories:

External magnetic ring\*1



\*The above is a single screwdriver.

JM-8190

## Precision screwdriver set

### Sockets:

M2.5 M5.0 G3.8 G4.5

### H4\*28MM:

⊕ T1 T2 T3 T4 T5 T6 T8 T10 T15 ⊖ 1.0 1.5 2.0 2.5 3.0 3.5 4.0

⊕ 1.0 1.5 2.0 2.5 3.0 3.5 ⊕ H0.9 H1.5 H2.5 H3.0 ⊕ Pz1 Pz2

⊖ Y0.8 Y2.0 Y2.5 Y3.0 ⊕ 0.8 1.2 1.5 2.0

⊕ 2.0 3.0 ⊕ 1.5 ⊖ 0.8

### Accessories:

Soft extension bar\*1 Strong adsorption magnetic mat\*1

Manual\*1 Handle\*1



JM-8180 T0 A



47PCS

## Precision screwdriver set

### Sockets:

M2.5 M5.0 G3.8 G4.5

### H4\*28MM:

⊕ T1 T2 T3 T4 T5 T6 T8 T10 T15 ⊖ 1.0 1.5 2.0 2.5 3.0 3.5 4.0

⊕ 1.0 1.5 2.0 2.5 3.0 3.5 ⊕ H0.9 H1.5 H2.5 H3.0 ⊕ Pz1 Pz2

⊖ Y0.8 Y2.0 Y2.5 Y3.0 ⊕ 0.8 1.2 1.5 2.0

⊕ 2.0 3.0 ⊕ 1.5 ⊖ 0.8

### Accessories:

Soft extension bar\*1 Strong adsorption magnetic mat\*1

Manual\*1 Handle\*1



JM-8180 T0 B



47PCS

## Precision screwdriver set

### Sockets:

M2.5 M5.0 G3.8 G4.5

### H4\*28MM:

⊕ T1 T2 T3 T4 T5 T6 T8 T10 T15 ⊖ 1.0 1.5 2.0 2.5 3.0 3.5 4.0

⊕ 1.0 1.5 2.0 2.5 3.0 3.5 ⊕ H0.9 H1.5 H2.5 H3.0 ⊕ Pz1 Pz2

⊖ Y0.8 Y2.0 Y2.5 Y3.0 ⊕ 0.8 1.2 1.5 2.0

⊕ 2.0 3.0 ⊕ 1.5 ⊖ 0.8

### Accessories:

Soft extension bar\*1 Felt bag\*1

Manual\*1 Handle\*1



JM-8184



47PCS

## Dual dynamics precision electric screwdriver

### H4\*28MM:

⊕ 0.8 1.2 ⊕ 1.5 ⊖ Y0.8 ⊕ T2 ⊕ 1.5

### Accessories:

Magnetizer\*1 TYPE-C Cord\*1 Manual\*1



JM-Y05



8PCS

## Dual dynamics precision electric screwdriver

41PCS

H4\*28MM:

- ⊗ T2 T3 T4 T5 T6H T7H T8H T9H T10H T15H T20H
- ⊗ H1.3 H1.5 H2.0 H2.5 H3.0 H3.5
- ⊖ 1.5 2.0 2.5 3.0 3.5 4.0
- ⊙ Y0.8 Y2.0 Y2.5 Y3.0
- ⊕ 1.5 2.0 2.5 3.0 3.5
- ⊗ 0.8 1.2 1.5 2.0
- ⊕ 2.0 3.0
- ⊙ U2.6
- ⊗ 1.5

Accessories:

Charger\*1



JM-Y03 PLUS

## Precise electric screwdriver pen

2PCS

Accessories:

TYPE-C Cord\*1

Handle\*1



JM-Y07

## Pro tech tool kit

201PCS

Sockets: M2.5 M3.0 M3.5 M4.0 M4.5 M5.0 M5.5 G3.8 G4.5

H4\*28MM:

- ⊗ H0.7\*2 H0.9\*2 H1.3\*2 H1.5\*2 H2.0 H2.5 H3.0 H3.5 H4.0 H4.5 H5.0 H6.0 ⊙ U2.6\*2 U3.0
- ⊗ T1\*2 T2\*2 T3\*2 T4\*2 T5\*2 T6 T7 T8 T9 T10 T15 T20 ⊕ 2.0\*2 2.3\*2 2.6 3.0
- ⊗ T6H T7H T8H T9H T10H T15H T20H ⊗ 0.8\*5 1.2\*2 1.5\*2 2.0\*2 ⊕ SIM0.8 SIM1.0
- ⊕ 1.0\*2 1.5\*2 2.0\*2 2.5\*2 3.5\*2 4.0\*2 JIS000 JIS00 JIS0 JIS1 ⊕ SQ0 SQ1 SQ2
- ⊖ 1.0\*2 1.3\*2 1.5\*2 2.0\*2 2.5\*2 3.0\*2 3.5\*2 4.0\*2 ⊗ PZ1.0\*2 PZ2.0\*2 PZ3.0\*2 PZ4.0\*1

Dr #2 #3 #4 #5 ⊙ Y0.8\*2 Y2.0\*2 Y2.5\*2 Y3.0\*2

H6.3\*25MM:

- ⊗ T8H T9H T10H T15H T20H T25H\*2 T30H\*2
- ⊗ H2.5 H3.0 H4.0 H5.0 H6.0 ⊙ U6 U8
- ⊖ 3.0 4.0 5.0\*2 6.0\*2 7.0\*2 ⊕ R1
- ⊕ 4.0\*2 5.0\*2 6.0\*2 6.5\*2
- ⊙ Y1.0\*2 Y2.0\*2 Y3.0\*2
- ⊗ T4 T5 T6 T7 ⊕ 2.3
- ⊗ PZ1.0 PZ2.0 PZ3.0

ADP: H6.3 to H4

Accessories:

- Small shovel-shape spudger\*1
- Double-end spudger\*1
- Double-sided plush glasses cloth\*1
- Straight metal spudger\*1
- Soft extension bar\*1
- Extension rod\*1
- Medium handle\*1
- Big handle\*1
- Magnetic mat\*1
- Big suction cup with key ring\*1

- Brush\*1
- Spudger\*1
- Tweezers\*1
- Magnetizer\*1
- Thin triangular slice\*12



YF-P13

## Pro tech tool kit

141PCS

Sockets:

M2.5 M3.0 M3.5 M4.0 M4.5 M5.0 M5.5 G3.8 G4.5

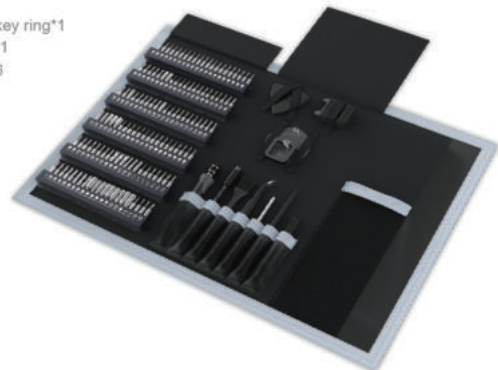
H4\*28MM:

- ⊗ H0.7\*2 H0.9\*2 H1.3\*2 H1.5\*2 H2.0 H2.5 H3.0 H3.5 H4.0 H4.5 H5.0 H6.0 ⊙ U2.6\*2 U3.0
- ⊗ T1\*2 T2\*2 T3\*2 T4\*2 T5\*2 T6 T7 T8 T9 T10 T15 T20 ⊕ 2.0\*2 2.3\*2 2.6 3.0 ⊗ 1.5\*2
- ⊗ T6H T7H T8H T9H T10H T15H T20H ⊗ 0.8\*5 1.2\*2 1.5\*2 2.0\*2 ⊕ SIM0.8 SIM1.0
- ⊕ 1.0\*2 1.5\*2 2.0\*2 2.5\*2 3.5\*2 4.0\*2 JIS000 JIS00 JIS0 JIS1 ⊕ SQ0 SQ1 SQ2
- ⊖ 1.0\*2 1.3\*2 1.5\*2 2.0\*2 2.5\*2 3.0\*2 3.5\*2 4.0\*2 ⊗ PZ1.0\*2 PZ2.0\*2 PZ3.0\*2 PZ4.0\*1

Dr #2 #3 #4 #5 ⊙ Y0.8\*2 Y2.0\*2 Y2.5\*2 Y3.0\*2

Accessories:

- Big suction cup with key ring\*1
- Double-end spudger\*1
- Thin triangular slice\*6
- Soft extension bar\*1
- Extension bar\*1
- Magnetizer\*1
- Tweezers\*1
- Spudger\*1
- Manual\*1
- Brush\*1
- Handle\*1



YF-P14

## Pet electric shaver

### Accessories:

- With limiting comb\*8(3/6/10/13/16/19/22/25mm)
- Ceramic shaver head\*1
- Charging base\*1(optional)
- Charging cable\*1
- Hair clipper\*1
- Manual\*1
- Lubricant\*1
- Brush\*1



JM-PE02



## Intell automatic drip irrigation kit

### Accessories:

- Rubber hose\*1
- Cross pipe\*1
- T-pipe\*1
- TYPE-C Cord\*1
- 10 Plants version
- 15 Plants version



JM-G01



## Precision screwdriver

### Sockets:

- M2.5\*2 M3.0 M3.5 M4.0 M4.5 M5.0 M5.5 G3.8 G4.5 PH2 0

### H4\*28MM:

- H0.7 H0.9 H1.3 H1.5 H2.0 H2.5 H3.0 H3.5 H4.0 H4.5 H5.0 H6.0 Ⓐ 2.0 2.3 2.6 3.0
- Ⓢ 1.0\*2 1.5\*3 2.0\*2 2.5\*2 3.0\*3 3.5\*2 JIS000 JIS00 JIS0 JIS1 Ⓢ SQ0 SQ1 SQ2
- T1\*3 T2\*3 T3\*2 T4\*2 T5 T6 T7 T8 T9 T10 T15 T20 T6H T7H T8H T9H T10H T15H T20H

- Ⓢ 1.0\*2 1.3\*2 1.5\*2 2.0\*2 2.5\*2 3.0\*2 3.5\*2 4.0\*2 Ⓢ SIM0.8 SIM1.0

- Ⓢ Y0.8\*3 Y2.0\*2 Y2.5\*2 Y3.0\*2 Ⓢ U2.0\*2 U2.6\*2 U3.0\*2 Ⓢ 1.5\*2

- PZ00\*2 PZ0\*2 PZ1\*2 PZ2\*2 Ⓢ 0.8\*3 1.2\*3 1.5\*3 2.0\*2

### H4\*45MM:

- Ⓢ 1.5 2.0

- Ⓢ 1.5 2.0

### Accessories:

- Soft extension bar\*1
- Aluminum alloy handle\*1
- Accessories box\*1
- Plastic spudger\*2
- Opening tool\*5
- Magnetizer\*1
- Suction up\*1
- Tweezer\*1



JM-8183



145PCS

## Aluminum alloy screwdriver

- Ⓢ Y0.6

- 1.5

- Ⓢ T2

- Ⓢ 1.5

- 0.8



JM-8179

## Precision screwdriver

H4\*28MM:

- ⊙ T1 T2 T3 T4 T5 T6H T7H ⊕ H1.3 H1.5 H2.0
- ⊕ 1.0 1.5 2.0 ⊖ 1.5 2.0 2.5
- ⊕ 0.8 1.2 2.0 ⊖ Y0.8 Y2.5
- ⊕ U2.6 ⊕ 2.0 ⊕ 1.5

Accessories:

- Magnetizer\*1
- Handle\*1



JM-8178

26PCS

## Professional & precision screwdriver tool set

Sockets:

- M2.5 M3.0 M3.5 M4.0 M4.5 M5.0 M5.5 G3.8 G4.5

H4\*28MM:

- ⊙ H0.7 H0.9 H1.3 H1.5 H2.0 H2.5 H3.0 H3.5 H4.0 H4.5 H5.0 H6.0 ⊕ SIM0.8 SIM1.0
- ⊙ T1 T2\*2 T3\*2 T4\*2 T5\*2 T6 T7 T8 T9 T10 T15 T20 T6H T7H T8H T9H T10H T15H T20H
- ⊕ 1.0\*2 1.5\*2 2.0\*2 2.5\*2 4.0\*2 ⊖ U2.6\*2 U3.0\*2 ⊖ Y0.8\*2 Y2.0\*2 Y2.5\*2 Y3.0
- ⊕ 1.0\*2 1.3\*2 1.5\*2 2.0\*2 2.5\*2 3.0\*2 3.5\*2 4.0 ⊕ 0.8\*2 1.2\*2 1.5\*2 2.0
- ⊕ PZ1.0 PZ2.0 PZ3.0 PZ4.0 ⊕ 2.0 2.3 2.6 3.0 ⊕ SQ0 SQ1 SQ2 ⊕ 1.5\*2

Accessories:

- Soft extension bar\*1
- Magnetizer\*1
- Tweezers\*1
- Handle\*1



JM-8177

106PCS

## Professional & precision screwdriver tool set

Sockets:

- M2.5 M3.0 M3.5 M4.0 M4.5 M5.0 M5.5 G3.8 G4.5

H4\*28MM:

- ⊙ H0.7 H0.9 H1.3 H1.5 H2.0 H2.5 H3.0 H3.5 H4.0 H4.5 H5.0 H6.0 ⊕ SIM0.8 SIM1.0
- ⊙ T1 T2\*2 T3\*2 T4\*2 T5\*2 T6 T7 T8 T9 T10 T15 T20 T6H T7H T8H T9H T10H T15H T20H
- ⊕ 1.0\*2 1.5\*2 2.0\*2 2.5\*2 4.0\*2 ⊖ U2.6\*2 U3.0\*2 ⊖ Y0.8\*2 Y2.0\*2 Y2.5\*2 Y3.0
- ⊕ 1.0\*2 1.3\*2 1.5\*2 2.0\*2 2.5\*2 3.0\*2 3.5\*2 4.0 ⊕ 0.8\*2 1.2\*2 1.5\*2 2.0
- ⊕ PZ1.0 PZ2.0 PZ3.0 PZ4.0 ⊕ 2.0 2.3 2.6 3.0 ⊕ SQ0 SQ1 SQ2 ⊕ 1.5\*2

Accessories:

- Soft extension bar\*1
- Extension bar\*1
- Magnetizer\*1
- Tweezers\*1
- Handle\*1



JM-8176

106PCS

## Multifunctional precision screwdriver

H4\*28MM:

- ⊙ T2 T3 T4 T5 T6H T7H T8H T9H T10H T15H T20H
- ⊙ H0.7 H0.9 H1.3 H1.5 H2.0 H2.5 H3.0 H3.5 H4.0
- ⊕ 1.0 1.5 2.0 2.5 3.0 3.5 ⊕ SQ0 SQ1 SQ2
- ⊖ 1.0 1.5 2.0 2.5 3.0 3.5 ⊕ 2.0 2.3 3.0
- ⊖ Y0.8 Y2.0 Y2.5 Y3.0 ⊖ U2.6
- ⊕ 0.8 1.2 1.5 2.0 ⊕ 1.5

Accessories:

- Soft extension bar\*1
- Handle\*1



JM-8175

50PCS

## Pro tech screwdriver set

Sockets:

M2.5 M3.0 M3.5 M4.0 M4.5 M5.0 M5.5 G3.8 G4.5

H4\*28MM:

⊙ H0.9 H1.3 H1.5 H2.0 H2.5 H3.0 H3.5 H4.0 H4.5 H5.0 H6.0 ⊙ SQ0 SQ1 SQ2

⊙ T2 T3 T4 T5 T6H T7H T8H T9H T10H T15H T20H ⊙ Y0.8 Y2.0 Y2.5 Y3.0

⊙ 1.0 1.5 2.0 2.5 3.0 3.5 ⊕ 1.0 1.5 2.0 2.5 3.0 3.5 ⊗ 1.5

⊕ 0.8 1.2 1.5 2.0 ⊕ 2.0 2.3

Accessories:

Double-head heads flexible opening tool\*1

H6.3 transfer to H4.0 Connector\*1

H4.0 transfer to H6.3 Connector\*1

30° Art and craft knife\*2

Thin triangular slice\*3

Opening tool\*2

Magnetizer\*1

Tweezers\*1

Handle\*1



JM-8173

69PCS

## Pro tech screwdriver set

Sockets:

M2.5 M3.0 M3.5 M4.0 M4.5 M5.0 M5.5 G3.8 G4.5

H4\*28MM:

⊙ H0.9 H1.3 H1.5 H2.0 H2.5 H3.0 H3.5 H4.0 H4.5 H5.0 H6.0 ⊙ SQ0 SQ1 SQ2

⊙ T2 T3 T4 T5 T6H T7H T8H T9H T10H T15H T20H ⊙ Y0.8 Y2.0 Y2.5 Y3.0

⊙ 1.0 1.5 2.0 2.5 3.0 3.5 ⊕ 1.0 1.5 2.0 2.5 3.0 3.5 ⊗ 1.5

⊕ 0.8 1.2 1.5 2.0 ⊕ 2.0 2.3

H4\*45MM:

⊕ 2.5 3.5 ⊙ 2.0 ⊕ U2.6 ⊙ Y2.5 ⊕ 2.3 ⊙ T10H

Accessories:

Big suction cup with key ring\*1

Soft extension bar\*1

Thin triangular slice\*3

Opening tool\*2

Tweezers\*1

Handle\*1



JM-8172

73PCS

## Portable DIY electronic maintenance magic box kit

H4\*28MM:

⊙ T2 T3 T4 T5 T6H T7H T8H

⊙ 1.5 2.0 2.5 3.0

⊕ 1.5 2.0 2.5 3.0

⊙ Y0.8 Y2.5

⊕ 0.8 1.2

⊗ 1.5

Accessories:

Handle\*1



JM-8171

17PCS

## Portable DIY electronic maintenance magic box kit

H4\*28MM:

⊙ T2 T3 T4 T5 T6H T7H T8H

⊙ 1.5 2.0 2.5 3.0

⊕ 1.5 2.0 2.5 3.0

⊙ Y0.8 Y2.5

⊕ 0.8 1.2

⊗ 1.5

Accessories:

Handle\*1



JM-8170

21PCS

## Portable precision screwdriver set

61PCS

### Sockets:

M2.5 M3.0 M3.5 M4.0 M4.5 M5.0

### H4\*28MM:

⊕ T3 T4 T5 T6H T7H T8H T9H T10H T15H T20H ⊕ SQ0 SQ1 SQ2 ⊕ 2.3

⊕ H0.9 H1.3 H1.5 H2.0 H2.5 H3.0 H3.5 H4.0 ⊕ U2.6 ⊙ Y2 Y3

⊕ 1.0 1.5 2.0 2.5 3.5 J000 J00 J0 J1 ⊕ 0.8 1.2 1.5 2.0

⊙ 1.0 1.5 2.0 2.5 3.0 3.5 4.0 ⊙ Y0.8 ⊕ T2

⊕ H4.5 H5.0 H6.0 ⊕ 1.5

### Accessories:

H6.3 transfer connector\*1

Soft extension bar\*1

H4 connector\*1

Handle\*1



JM-8166

## Precision screwdriver set & socket set

33PCS

### Sockets:

M2.5 M3.0 M3.5 M4.0 M4.5

### H4\*28MM:

⊕ H2.0 H3.0 ⊕ T3 T4 T5 T6H T7H T8H T9H T10H ⊙ 1.0 2.0 3.0

⊕ 1.5 2.5 3.5 ⊕ 0.8 1.2 ⊙ Y0.8 ⊕ 1.5

### Threaded screwdriver:

#2 #3 #4 #5

### Accessories:

Flexible extension bar\*1

Extension bar\*1

Tweezers\*1

Handle\*1



JM-8160

## Precision screwdriver set & socket set

34PCS

### H4\*28MM:

⊕ T3 T4 T5 T6H T7H T8H T9H T10H

⊕ H0.9 H1.5 H2.0 H3.0

⊕ 1.0 1.5 2.0 3.5

⊙ 1.0 1.5 2.0 3.0

⊙ Y0.8 ⊕ 0.8 1.2

⊕ U2.6 ⊕ 2.3

⊕ 1.5

### Threaded screwdriver:

#2 #3 #4 #5

### Accessories:

Flexible extension bar\*1

Tweezers\*1

Handle\*1



JM-8159

## Aluminium alloy handle DIY repair tool kit

38PCS

### H4\*28MM:

⊕ H0.9 H1.3 H1.5 H2.0 H2.5 H3.0 H3.5 H4.0 ⊙ Y2.0

⊕ T3 T4 T5 T6H T7H T8H T9H T10H T15H T20H

⊙ 1.0 1.5 2.0 2.5 3.0 3.5 4.0 ⊕ 2.3 ⊕ 0.8 1.2

⊕ 1.0 1.5 2.0 2.5 3.5 ⊕ 0.8 SHPH ⊕ U2.6

### Accessories:

Extension bar\*1

Handle\*1



JM-8151

## Anti-slip precision screwdriver

- ⊕ T2 T3 T4 T5 T6
- ⊕ 1.5 2.0
- ⊖ 2.5
- ⊖ Y0.8
- ⊕ 0.8 1.2
- ⊕ 1.5



JM-8147

## Household DIY maintenance toolkit **47PCS**

### Sockets:

M2.5 M3.0 M3.5 M4.0 M4.5 M5.0

### H4\*45MM:

- ⊕ T2 T5 ⊖ 1.0 1.5 2.0
- ⊕ 1.0 1.5 2.5 ⊖ Y0.8
- ⊖ U2.6 ⊕ 0.8 1.2

### H6.3\*25MM:

- ⊕ H3.0 H4.0 H5.0 ⊕ T6 T7 T8H
- ⊖ 3.0 4.0 5.0 ⊖ Y2.0 Y3.0 ⊖ U6
- ⊕ 4.0 5.0 6.0 ⊕ Pz2 Pz3

### Accessories:

- Tin scraper made of memory metal\*1
- H6.3 transfer to H4.0 Connector\*1
- H4 transfer to 1/4 connector\*1
- Triangle opening tool\*1
- Strong suction cup\*1
- Ratchet handle\*1
- Diagonal plier\*1
- Extension bar\*1
- SIM card pin\*1
- Tweezers\*1
- 30"Knife\*1
- Crowbar\*1
- Handle\*1



JM-8146

## Antic drop electronic toolkit

### H4\*28MM:

- ⊕ T3 T4 T5 T6H T7H T8H T9H T10H T15H T20H
- ⊕ H1.3 H1.5 H2.0 H3.0 H4.0 H5.0
- ⊖ 1.5 2.0 2.5 3.0 3.5
- ⊕ 1.0 1.5 2.0 2.5 3.5
- ⊖ Y2.0 ⊖ U2.6
- ⊕ 0.8 1.2 ⊕ 2.0

### Accessories:

- Components storage box\*1 (including 2PCS PH2.5 sockets)
- Handle\*2(⊕ 1.5 ⊕ 0.8)
- 30" art and craft knife\*1
- Roller opening tool\*1
- Metal spudger\*1
- Extension bar\*1
- Opening tool\*1
- SIM card pin\*1
- Suction cup\*1
- Tweezers\*1



JM-8139

**47PCS**

## Precision screwdriver toolkit

### Sockets:

M2.5 M3.0 M3.5 M4.0 M4.5 M5.0

### H4\*28MM:

- ⊕ H0.9 H1.3 H1.5 H2.0 H2.5 H3.0 H3.5 H4.0 H4.5 H5.0 H6.0 ⊕ SQ0 SQ1 SQ2
- ⊕ T3 T4 T5 T6 T7 T8 T9 T10 T15 T20 ⊕ 1.0 1.5 2.0 2.5 3.5 J000 J00 J0 J1
- ⊖ 1.0 1.5 2.0 2.5 3.0 3.5 4.0 ⊕ 2.3 ⊖ Y2.0 Y3.0 ⊖ U2.6 ⊕ 0.8 1.2 1.5 2.0

### Accessories:

- H6.3 transfer to H4.0 Connector\*1
- Soft extension bar\*1
- Extension bar\*1
- Handle\*1



JM-8125

**58PCS**

## Electronic maintenance single screwdriver

- ⊕ 1.2 1.5 2.0 2.5
- ⊖ 1.5 2.0 2.5
- ⊗ 0.8 1.2 1.5
- ⊙ T4 T5 T6



JM-8119



## Precision screwdriver toolkit various bits

33PCS

H4\*28MM:

- ⊕ T3 T4 T5 T6H T7H T8H T9H T10H T15H T20H
- ⊗ H1.3 H1.5 H2.0 H2.5 H3.0 H4.0
- ⊖ 1.5 2.0 2.5 3.0 3.5 ⊖ Y2.0
- ⊕ 1.5 2.0 2.5 3.0 3.5 ⊕ 0.8
- ⊙ 2.0 ⊙ U2.6

Accessories:

- Extension bar\*1
- Tweezers\*1
- Handle\*1



JM-8101



## Precision screwdriver toolkit various bits

32PCS

H4\*28MM:

- ⊕ T3 T4 T5 T6H T7H T8H T9H T10H T15H T20H
- ⊗ H1.3 H1.5 H2.0 H2.5 H3.0 H4.0
- ⊖ 1.5 2.0 2.5 3.0 3.5 ⊖ Y2.0
- ⊕ 1.5 2.0 2.5 3.0 3.5 ⊕ 0.8
- ⊙ 2.0 ⊙ U2.6

Accessories:

- Tweezers\*1
- Handle\*1



JM-8100



## High-end home improvement screwdriver set

60PCS

Socket:

- M5.0 M6.0 M7.0 M8.0 M9.0 M10 M11 M12 M13

Matte chrome bits H4\*28mm:

- ⊕ T2 T3 T4 T5 ⊕ H1.3 H1.5 H2.0 H2.5 ⊖ Y8 Y2.5 ⊕ 0.8 1.2 ⊗ 1.5
- ⊖ 1.0 1.5 2.0 2.5 ⊖ 1.0 1.5 2.0 2.5 ⊙ U2.6

H6.3\*25mm:

- ⊕ T7H T8H T9H T10H T15H T20H T25H T27H T30H ⊕ 6.0 6.5
- ⊖ 3.0 6.0 7.0 ⊗ H4.0 H5.0 ⊗ Pz1 Pz2 Pz3 ⊙ U6.0 ⊖ Y1

H6.3\*45mm:

- ⊕ 4.0 5.0 ⊖ 4.5 5.0

Accessories:

- H6.3 transfer to H4.0
- Connector\*1
- Marble connector\*1
- Multipoint adjustable bar\*1
- Handle\*1



JM-6125



## Professional maintenance tool set

31PCS

Sockets 1/4\*20MM:

M5.0 M6.0 M7.0 M8.0 M9.0 M10 M11 M12 M13

Bits with color ring H6.3\*60MM:

⊕ T20 T25 ⊕ H5.0 H6.0 ⊖ SL1 SL2 ⊕ PH1 PH2 ⊕ Pz1 Pz2

H4\*45MM:

⊖ 2.0 ⊕ 1.0 1.5 ⊕ T2 ⊕ 0.8 1.2

Accessories:

Spring flexible extension bar\*1

Marble connector\*1

Magnetizer area\*1

Handle\*1



JM-6123

## Professional maintenance tool set

31PCS

Sockets 1/4\*25MM:

M5.0 M6.0 M7.0 M8.0 M9.0 M10 M11 M12 M13

Bright chrome bits H6.3\*60MM:

⊕ T20 T25 ⊖ 5.0 6.0 ⊕ 5.0 6.0 ⊕ H5.0 H6.0 ⊕ Pz1 Pz2

H4\*45MM:

⊕ 1.0 1.5 ⊖ 2.0 ⊕ 0.8 1.2 ⊕ T2

Accessories:

Flexible extension bar\*1

Marble connector\*1

Magnetizer area\*1

Medium handle\*1

Extension bar\*1

Big handle\*1



JM-6121

## Household tool set

48PCS

H6 3\*25MM:

⊕ T4 T5 T6 T7 T8H T9H T10H T15H T20H T25H T27H T30H T40H

⊕ H2.0 H2.5 H3.0 H4.0 H5.0 H6.0

⊖ 2.0 2.5 3.0 4.0 5.0 6.0 7.0

⊕ 3.0 4.0 5.0 6.0 6.5

⊕ Pz0 Pz1 Pz2 Pz3

⊖ Y1.0 Y2.0 Y3.0

⊕ 2.0 2.3 3.0

⊖ U6 U8

⊖ R1 R2

Accessories:

Multipoint adjustable bar\*1

Nail pryer\*1

Handle\*1



JM-6124

## Telecom ratchet screwdriver toolkit

69PCS

Sockets:

M5.0 M6.0 M7.0 M8.0 M9.0 M10 M11 M12 M13

Bright chrome bits H6.3\*25MM:

⊕ T4 T5 T6H T7H T8H T9H T10H T15H T20H T25H T30H ⊖ Y1.0

⊕ H2.5 H3.0 H4.0 H5.0 H6.0 ⊖ 3.0 4.0 5.0 6.0 7.0 ⊕ R1

⊕ 4.0 5.0 6.0 6.5 ⊖ U6 ⊕ 2.3 ⊕ Pz1 Pz2 Pz3

H4\*28MM:

⊕ T3 T4 T5 T6H T7H T8H T9H T10H T15H T20H

⊖ 1.5 2.0 2.5 3.0 3.5 ⊕ 3.0

⊕ 2.0 2.5 3.0 3.5

⊕ H2.5 H3.0 H4.0

Accessories:

Soft extension bar\*1

Marble connector\*1

Extension bar\*1

Medium handle\*1

Big handle\*1



JM-6111

## 6 inches Clamping Tools

45# Carbon Steel



### JM-CT1 Series

## 8 inches Clamping Tools

45# Carbon Steel



### JM-CT1 Series

## American Style Clamping Tools

45# Nickel Alloy



### JM-CT2 Series

▶ **CT1 Series Long nose pliers**  
Made of high-quality steel, with long and hardened jaw, used for wire stripping.



▶ **CT1 Series Diagonal pliers**  
With wide and hardened jaw, labor-saving.



▶ **CT1 Series Flat nose pliers**  
Made of high-quality steel, with long and hardened jaw, used for wire stripping.



▶ **CT2 Series American style long nose pliers**  
Made of high-quality steel, with long and hardened jaw, used for wire stripping.



▶ **CT2 Series American style diagonal pliers**  
With wide and hardened jaw, labor-saving.



## Cold-rolled steel 08F



### ▶ CT4 Series Crimping Pliers

Used for wire crimping, stripping and trimming. Suitable for cutting two type wires (6P, 8P).



### ▶ CT4 Series Multifunctional Wire Stripper

Used for wire crimping, stripping and trimming. Suitable for cutting three type wires (4P, 6P, 8P). Equipped with wire stripping knife for wire stripping and clamping.



### ▶ CT4 Series Multifunctional Wire Stripper

Suitable for wires in 0.6 to 2.6 mm. Round hole design can protect wire from damage and make it easy to strip wires.



## JM-CT4 Series

### Network Repair Tool Set

17PCS

#### Accessories:

1. Wire Stripper
2. Long Nose Pliers
3. Crimping Pliers
4. Diagonal Pliers
5. 6P 8P Registered Jack
6. PH2 Screwdriver
7. SL2 Screwdriver
8. Electroprobe
9. Electric Soldering Iron
10. Insulating Tape
11. Battery (9V)
12. Solder Wire
13. Punch Down Tool
14. Simple Punch Down Tool
15. Multimeter
16. Network Tester
17. Curved Tweezers

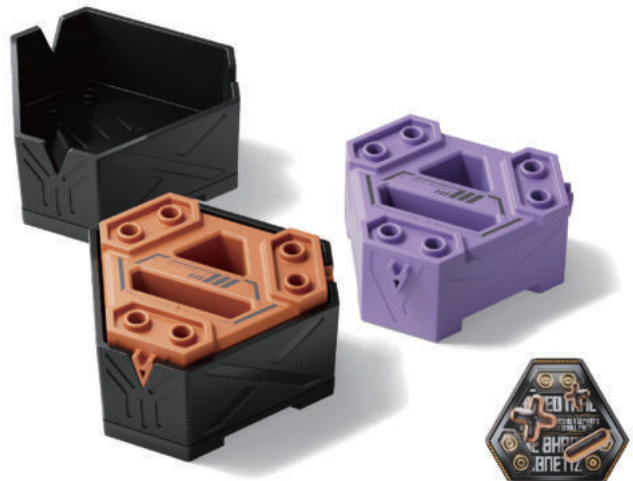


JM-P15

### Cube Shaped Magnetizer

#Magnetization

#Demagnetization

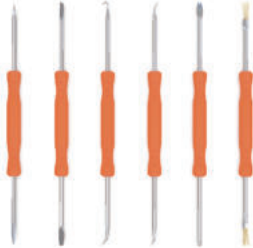


JM-Z21

## Professional Solder Assist Tool **6PCS**

Accessories:

- 1.Hook
- 2.Fork
- 3.Crotchet
- 4.Sharpnes
- 5.Knife
- 6.Broom



JM-Z01

## 2025 NEW ARRIVAL **6PCS**

### Micro Hexagonal Hole-Punching Drill Bits

H4.0MM:

0.8 1.0 1.5 2.0 2.5 3.0



JM-Z22

## 2025 NEW ARRIVAL **6PCS**

### Inkless Meta Pencil Bits

H4.0\*27.3MM



JM-Z23

## 2025 NEW ARRIVAL **6PCS**

### Ball Hex Set

H4.0\*28MM:

H1.5 H2.0 H2.5 H3.0 H3.5 H4.0



JM-Z24

## 2025 **6PCS**

### Anti-Slip Short Screwdriver Bits

H6.3\*25MM:

PH1 PH2 PH3 Pz1 Pz2 Pz3



JM-03

21

## 2025 **6PCS**

### Anti-Slip Long Screwdriver Bits

H6.3\*50MM:

PH1 PH2 PH3 Pz1 Pz2 Pz3



JM-04

## 3 IN 1 Magnetic Operating Mat

### Features:

Magnetized to hold small screws securely.  
Correctable surface keeps notes and stops mistakes.  
Reduces reassemble time by up to 40%.

### Accessories:

- 1.Magnetic Working Mat
- 2.Mark Pen
- 3.Eraser



JM-Z09



3PCS

## Accessories Box

### Features:

Fashionable, small and portable. The switch with slide fastener is sturdy, safe and convenient. The grids in the accessories box can be dismantled and assembled by yourself.



JM-Z14

## PCB Holder Series

pe which is beautiful  
stry, home living and



JM-Z15



## Anti-static and Heat-proof Working Mat

### Features:

Made of silicone which meet the American FDA standard with high temperature resistance.  
Individual grid section can keep different components.  
Applicable to all the electronic maintenance and repair workshop.  
Can be used with magnetic mat to store and mark the screws or parts easily.



JM-Z16



## Anti-static and Heat-proof Working Mat

### Features:

Made of silicone which meet the American FDA standard with high temperature resistance.  
Individual grip section can place different components.  
Applicable to all the electronic maintenance and repair workshop.  
The magnetic mat can store the parts safely and easily.



JM-Z17

## 8X Optical Magnifier

### Features:

With two imported CREE LED lamps.  
It's workable even in dark environment.  
Large diameter lens makes it more clear and convenient to observe.  
The handle's end part is round-shaped, with small holes in butterfly shape which is beautiful and can increase the frictional force. Application:  
Digital product repair, education and instrument evaluation, printing industry, home living and machinery industry.



JM-Z19

## LCD Screen Opening Pliers

### Features:

Patented product.  
Ergonomically designed handle with non-slip texture grip for comfortable hold.  
Adjustable tablet holder to any size of tablets and mobiles.  
Multiple angle PVC suction cup, easier to take apart every gadgets you want.



JM-OP05

## Roller Opening Tool

### Features:

Common used in laptops, mobiles and tablets disassembling.  
Special rolling-wheel design for opening.  
Made of high quality stainless steel, durable



JM-OP06

## 3 In 1 Metal Spudger Set

### Features:

- More durable with special alloy steel material.
- Easy-grip handle with just the right length for comfortable use.
- Multi-type head design for different appliances.

3PCS



JM-OP07

## Flexible Opening Tool

### Features:

- New imported memory material for repeat operation.
- Slim design for disassembling mobile phones, tablet computers.



JM-OP08

## LCD Screen Opening Pliers

### Features:

- Patented product.
- Ergonomically designed handle with non-slip texture grip for comfortable hold.
- Extra large suction cup with multi-angle design, can easily and safely open over 4.7 inches of phones and tablets. Original pulling screw-thread design, the suction power is up to 60%.



JM-OP10

## 10 IN 1 Anti-static Fiber Opening Tools

10PCS

### Features:

- The spudger is made of anti-static material which can efficiently protect electronic components from static. Best angle for prying, make your disassembling easier.
- The product is stable and durable after high pressure injection molding.
- Ergonomic design makes the grip more comfortable.



JM-OP11

## Double-head Heads Flexible Opening Tool

### Features:

Patented design. Made of ingenious memory metal with good flexibility and resilience to protect electronic products from impactive damage. Protective cover for the security. With spatial mechanical characteristics, it can work speedily even in the most difficult reaching place.(Ultrathin and flexible with 0.25mm thickness)



JM-OP12

## Precision Anti-static Metal Crowbar

### Features:

Made of high quality alloy steel.  
Anti-static coating makes it more durable.  
Suitable for disassembling phone, computer, gamepad and other electronics.



JM-OP13

## LCD Screen Opening Tool Set

### Features:

Patent product.  
Made of ingenious memory metal with good flexibility and resilience to protect electronic products from impactive damage. With spatial mechanical characteristics, it can work rapidly even in the most difficult reaching place.

### Accessories:

- 1.Screen opening plier
- 2.Double-end opening tool

2PCS



JM-OP14



## Opening Tool Set

### Features:

High toughness and good flexibility.  
Made of imported anti-static environmental-friendly POM with great toughness and hardness. Equipped with rolling opening tool (JM-OP06) and double-end metal opening tool (JM-OP12) that can help you disassemble items quickly.

13PCS



JM-OP15

## Fiber Opening Tool

### Features:

Made of imported anti-static environmental-friendly POM, with high toughness and abrasion resistance. The working part with mechanics design makes your repair job more convenient.



JM-OP16

6PCS



## Multifunctional Roller Screwdriver Tool

### Features:

With precision bright chrome bits and flexible roller opener.

Application: For iPhone 7 and above models disassembling.

Use \*0.8 bit to remove the two screws on the bottom of the phone.

Use the heat gun to heat the edge of screen for opening. Use OP022 roller

to inset the edge of screen for a round until the screen is dismantled.

Bright chrome bits H4\*28mm:

⊙ Y0.8 ⊗ 0.8 ⇄ 1.5 ⊕ 1.5

### Accessories:

1.OP021 Roller

2.OP022 Roller



JM-OP17



## Curved Screen Disassemble Blade

### Features:

\*Specially designed for 98% of curved screen phone

\*High toughness

\*Made of SUS301 high flexibility steel

\*Epoxy handle design

\*Appropriate size



JM-OP18

## Quadrangled Spudger



JM-OP010

## Double-end Spudger



JM-OP011

Thick Triangular Slice



JM-OP012

Curved Spudger



JM-OP013

Thin Triangular Slice



JM-OP014

Extension  
Quadrangled  
Spudger



JM-OP015

Small Shovel-shape  
Spudger



JM-OP016

Curved Pointed  
Spudger



JM-OP017

Straight Pointed  
Spudger



JM-OP018

Orthogonal  
Crowbar



JM-OP019

Large Shovel-shape  
Spudger



JM-OP020

Straight Metal  
Spudger



JM-OP01

Curved Metal  
Spudger



JM-OP02

Pointed Metal  
Spudger



JM-OP03

Anti-Static Plastic  
Spudger



JM-OP04

Big suction cup  
with key ring



JM-SK01

Solder pen 15g



JM-SW01

Thermal conductive grease



JM-SW02

Soldering paste



JM-SW03

Solder sucker



JM-Z02

Simple Y-type soldering iron stand



JM-Z03

Tip cleaning sponge



JM-Z04

Aluminium alloy carving knife



JM-Z05

Aluminium alloy scraper



JM-Z06

30° Art and craft knife



JM-Z07

Push type alcohol  
bottle 120ml



JM-Z10

Push type alcohol  
bottle 180ml



JM-Z11

Memory metal tin  
scraping knife



JM-Z12

Double-sided  
plush glasses  
cloth



JM-CS05

Rubber dust blower



JM-CS11

Digital Multimeter



JM-832

Precision  
diamond file

5PCS



JM-FL1-1

Single  
screwdriver set

5PCS



JM-999

## Stainless steel magnetic connector



JM-TP-01

## Cursor ruler



JM-R12

## Anti-static wrist strap



JM-E01

## Powerful LCD suction cup

### Features:

Made with environmental PVC material. Fine seal-ability, oil proof, anti-corrosion and nondeformable.

Metal screw-thread axis with a ABS plastic handle. Pull and suction capacity has been improved to 60%.

Suitable for disassembling screens off mobiles and tablets.

3PCS



JM-SK04

## Combined suction cup for iPhone 7

### Features:

Working part is made of environmental protection PVC material which is not easily deformed.

The handle is made of ABS and TPE with high hardness and comfortable hand feeling.

When you opened the iPhone 7 screen the suction can be used as a holder to hold the disassembled part and making your repair job more convenient.



JM-SK05

## Electric Soldering Iron

Power:  
SL01 30W  
SL02 40W  
SL04 60W



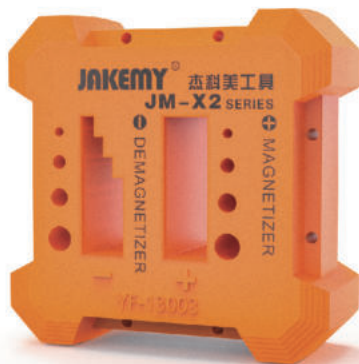
JM-SL0 Series

## Mini Size Magnetizer and Demagnetizer



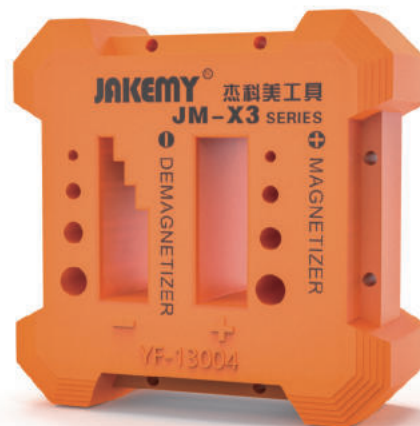
JM-X1

## Mini Size Magnetizer and Demagnetizer



JM-X2

## Large Size Magnetizer and Demagnetizer



JM-X3

## Components Adsorption Bracelet

### Features:

Lock catch design.

Good looking and easy to use.

The band of the bracelet can be adjusted according to different wrist size.

It can be used to magnetize and adsorb small components.



JM-X4



## Magnetic Wristband

### Features:

Made of 420 D oxford fabric.

Velcro design can fit all the size of wrist.

Suitable for home improvement for gathering screws, nails and drill bits.



JM-X5



## Component Grabber

### Material:

Precision Cast Steel

### Features:

Apply to home improvement and outdoor infrastructure.

Ultra-precision processing which can make it not easy to damage.

The tiny components will not easy to fall off with four claws when gripping.

With strong magnetic that can adsorb small screws and nails in certain areas.



JM-T8-11



## Replaceable Anti-static Tweezers Set

7PCS

### Accessories:

Curved tweezers

Pointed tweezers

Replaceable screws

Stainless steel handle

### Features:

The active part of the tweezers is made of carbon fiber

with the features of high hardness and anti-static.

The tweezers' head is replaceable according to demand.



JM-T10-11



## Replaceable Anti-static Flexible Tweezers Set

7PCS

### Accessories:

Curved tweezer  
Pointed tweezer  
Replaceable tweezer  
Stainless steel handle

### Features:

The active part of the tweezers is made of carbon fiber with the features of high hardness, anti-static and flexible.

The tweezer head is replaceable according to demand.



JM-T10-12

## Efficient Anti-static Tweezers Set

3PCS

### Features:

The product is made of carbon fiber with the features of high hardness, anti-static and high temperature resistant.



JM-T11

## Tweezers series

Tweezers are made of SUS201  
HRC 35~40°C

Tweezers are made of SUS201  
HRC 35~40°C

T2 Series ▶

T7 Series ▶



Black plated surface  
The thickness of tweezers is 1.4mm

Black plated surface  
The thickness of tweezers is 1.8mm  
Hardened head

### ▶ 11 Series Long Nose Tweezers

The tweezer's tip is longer than standard length and it's suitable for operating precision parts



### ▶ 12 Series Short Pointed Tweezers

The tweezer's tip is harder than standard tweezer. The tweezer tip will not warp when clipping precision part.



### ▶ 13 Series Flat Tweezers

The tweezer's tip is round that it can protect parts from damage. It's suitable for picking up chips.



### ▶ 14 Series Pointed Tweezers

The tweezer's tip is very sharp and it's well for operating high intensity integrated circuit's parts.



### ▶ 15 Series Curved Tweezers

It's suitable for picking up parts of high intensity integrated circuit in narrow place.



## Use of the bits:

 Phillips	+2.0mm	Macbook Pro Battery, Macbook Pro, Macbook Pro Trackpad, Macbook Pro Keyboard, Macbook Pro Assembly, etc.
	+1.5mm	For iPhone 4/4s/5/5s/6/6s/6p/6s PLUS/7/7p/8/8p/x/xs/xr, Macbook Pro Retina Trackpad, Macbook Pro Retina/Macbook Air Keyboard, etc.
	+1.0 to 5.0mm	Phillips "+": 1.0mm, 1.5mm, 2.0mm, 2.5mm, 3.0mm, 4.0mm, 5.0mm for the disassembly of Samsung mobile phones and other mainstream mobile phones, a number of fine small household appliances, toys, watches, glasses, etc.
 Flat-head	-1.0 to 5.0mm	Flat-head "-": 1.0mm, 1.5mm, 2.0mm, 2.5mm, 3.0mm, 4.0mm, 5.0mm for the disassembly of Samsung mobile phones and other mainstream mobile phones, a number of fine small household appliances, toys, watches, glasses, etc.
 Pentagon	☆0.8mm	0.8mm Pentalobe Screwdriver for iPhone 4/4s/5/5s/6/6s/6p/6s PLUS/7/7p/8/8p/x/xs/xr.
	☆1.2mm	1.2mm Pentalobe Screwdriver for Macbook Pro Retina/Macbook Air Battery, Macbook Pro Retina/Macbook Air Trackpad, Macbook Pro Retina/Macbook Air Keyboard, Macbook Pro Retina/Macbook Air Assembly.
	☆1.5mm	1.5mm Pentalobe Screwdriver for 2009 MacBook Pro 15" Battery.
 Torx	T5	Torx T5 For Macbook Pro Retina/Macbook Air Battery, Macbook Pro Retina/Macbook Air Trackpad, Macbook Pro Retina/Macbook Air Keyboard, Macbook Pro Retina/Macbook Air Assembly, Motorola, Nokia, HTC series mobile phone etc.
	T3/T4/T6/T7/T9	Torx T3/T4/T6/T7/T9 For Macbook Pro Retina/Macbook Air Battery, Macbook Pro Retina/Macbook Air Trackpad, Macbook Pro Retina/Macbook Air Keyboard, Macbook Pro Retina/Macbook Air Assembly, Motorola, Nokia, HTC series mobile phone etc.
	T2	For Huawei Mate 7 & Mate 8 and P7 P8 P9 P10 PLUS
 Torx Security	T6R/T8R/T10R	Torx T6R/T8R: parts For Macbook Pro Retina/Macbook Air Assembly, XBOX 360 & Motorola mobile phones and Sony Ericsson mobile phone, T10R: Screwdriver for XBOX 360.
 Tri-wing	Y0.8mm	Tri-point 0.8mm Y Screwdriver for Apple Watch and iPhone 7 only
	Y2.5mm	Tri-point 2.5mm Y Screwdriver for Macbook A1278 Trackpad/Trackpad/Keyboard, GBA NDS DSL Dsi 3DS XL Wii PS4 Controller.
 U shaped	U1.7 U2.3 U2.6	U shaped Groove Type Screwdriver for The Bulls Socket & Other Repair Tool.
 Triangle	△2.0/2.3/3.0mm	Triangle Head Screwdriver Set for Fixing Toys Like Thomas Trackmaster Trains Tomy and Thomas Mini Trains etc.
 Stand off	1.5mm	1.5mm Pinhead Phillips Precision screwdriver for repair iPhone 5/5S/4/4S Apple Watch 1/2 Middle Plate 2.5.
 Hex socket	2.5 to 5.5mm	Socket 2.5 to 5.5mm Screwdriver for Computer, Glasses, Watches, drones with camera and Household. Socket Head M2.5 Hexagon Screwdriver for iPhone 6S Metal Middle Plate Motherboard Screws Open Repair Tool.
 Hex	0.9 to 6.0mm	Hex sizes 0.9-6.0mm Screwdriver for Computer, Glasses, Watches, drones with camera and Household.
 Gamebit	3.8/4.5mm	Gamebit 3.8/4.5 mm bit for SNES N64 GameCube Game Consoles + Genesis Master System Games..
 SIM ejector	0.8mm	Point 0.8mm for SIM CARD REMOVER EJECT PIN.

# Contact Information:

National Operation Center Address: No.10 Huanzhen East Road, Yanbu, Dali Town, Nanhai District, Foshan City, Guangdong Province, China

Tel: +86 18011760130 Email: [yifengjakemy@gzyftools.com](mailto:yifengjakemy@gzyftools.com)

Official Website: [www.jakemy.com](http://www.jakemy.com)

1688.com: <https://gcjakemy.1688.com/>

Alibaba.com: <https://cnjakemy.en.alibaba.com>

The logo for JAKEMY, featuring the word "JAKEMY" in a bold, red, sans-serif font. A registered trademark symbol (®) is positioned to the upper right of the letter "Y".

\*All pictures shown are for illustration purpose only. Actual product may vary due to product enhancement.

\*All product parameter and function are subject to change without notice.

\*Yifeng company reserves the right to change the product specification and appearance without notice.